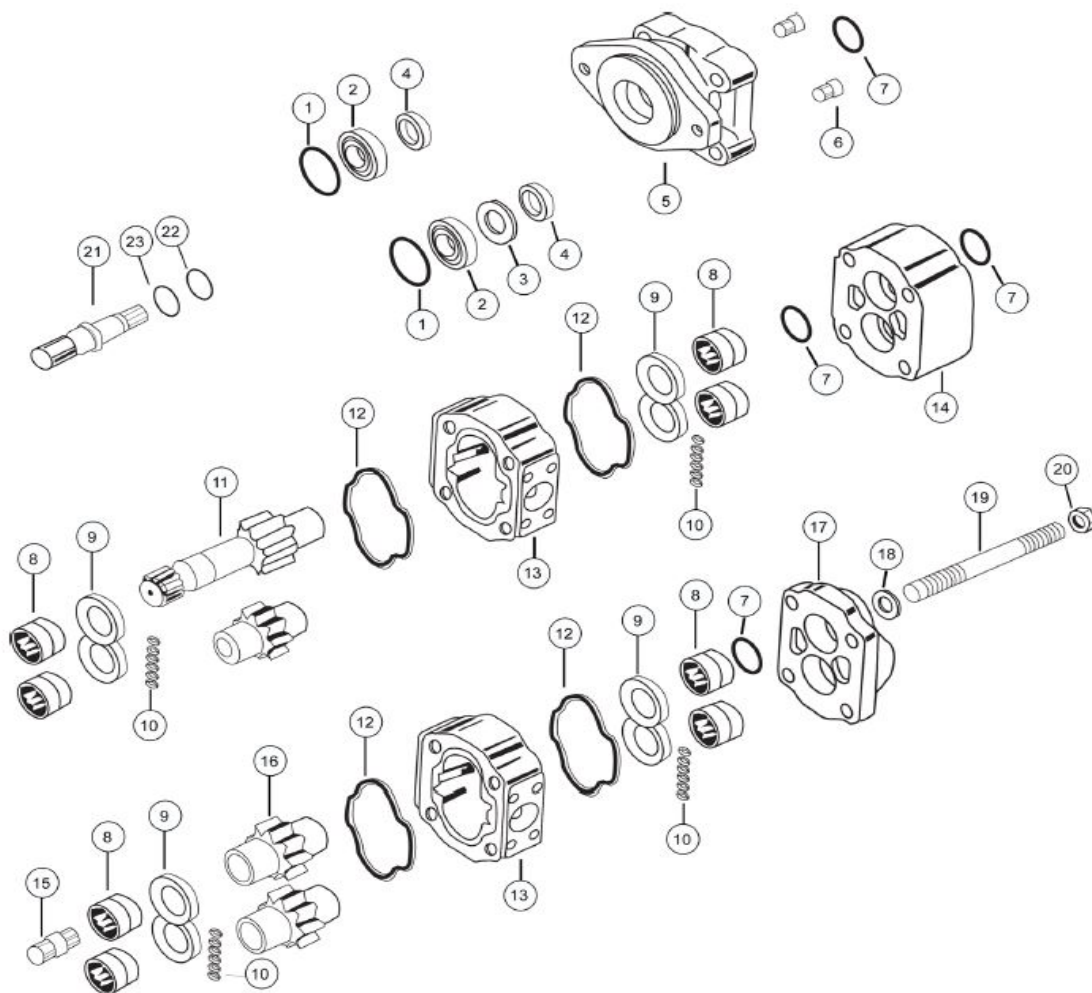


## Hydropower Services BV

Zwanenburgerdijk 330 a  
1161 NN Zwanenburg  
The Netherlands  
Tel. 0653118328  
[e-mail info@hydropower.nl](mailto:info@hydropower.nl)  
[Website www.hydropower.nl](http://www.hydropower.nl)

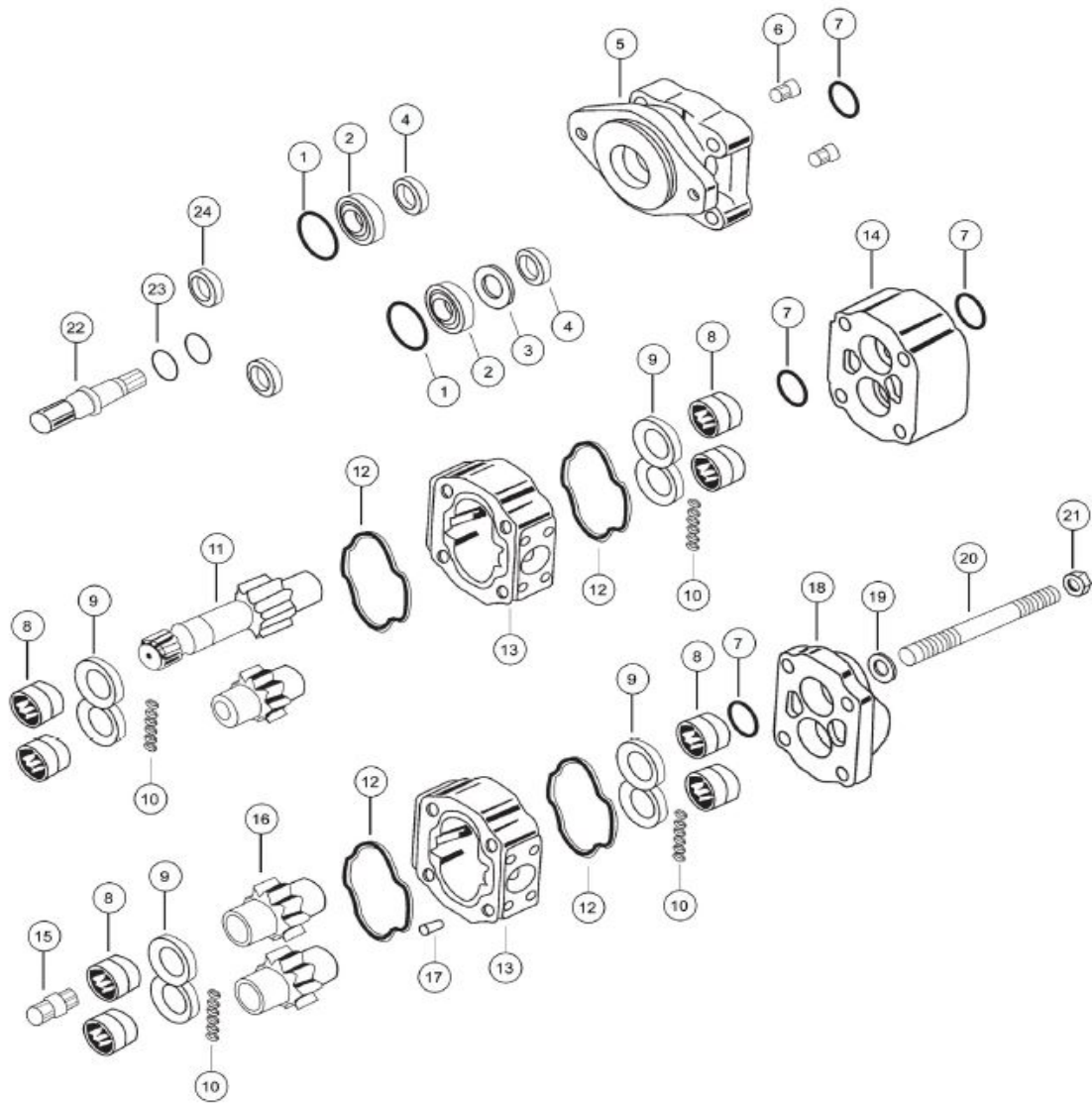


30/3000 SERIES



1	SHAFT BEARING SNAP RING	X05-03-56200	391-2686-063
2 a	INPUT SHAFT BEARING	X03-16-12552	391-0381-040
2 b	BEARING SPACER ( IN PLACE OF SHAFT BEARING )	A30-92-38520	391-3383-069
3	MOTOR SEAL RETAINER USED WITH SHAFT BEARING OR SPACER	A20-60-10000	391-3381-040
4 a	PUMP LIP SEAL FOR CONTINENTAL SHAFT ONLY	X89-11-02508	391-2883-107
4 b	PUMP LIP SEAL FOR PIGGY BACK 76/31 SHAFT END COVER	X83-11-03308	391-2883-103
4 c	MOTOR LIP SEAL	X83-36-02709	391-2883-119
4 d	MOTOR LIP SEAL FOR CONTINENTAL SHAFT ONLY	X83-36-02509	391-2883-126
5 a	30 PAD PILOT PUMP S.E.C. TYPE 00	A30-10-21100	312-5013-201
5 b	30 6 BOLT ROUND WITH 2.625" or 66,67 mm PILOT PUMP S.E.C. TYPE 05	A30-10-21651	312-5043-201
5 c	30 4 BOLT B PILOT PUMP S.E.C. TYPE 42 (4" or 101,6 mm pilot)	A30-10-21420	312-5033-201
5 d	30 4 BOLT C PILOT PUMP S.E.C. TYPE 78 (5" or 127 mm pilot)	A30-10-21430	312-5033-202
5 e	30 2 BOLT A PILOT PUMP S.E.C. TYPE 94 (3 1/4" or 82,55 mm pilot)	A30-10-21210	312-5023-205
5 f	30 2 BOLT B PILOT PUMP S.E.C. TYPE 97 (4" or 101,6 mm pilot)	A30-10-21220	312-5023-202
5 g	30 2 BOLT B (TYPE 2) PILOT PUMP S.E.C. TYPE 96 (4" or 101,6 mm pilot)	A30-10-22220	312-5029-201
5 h	30/50 SHAFT END COVER FOR PIGGYBACK UNITS TYPE 91	A02-10-21500	312-5029-210
5 i	75/30 SHAFT END COVER FOR PIGGYBACK UNITS TYPE 92	A03-10-21500	312-5026-204
5 j	30 2/4 BOLT B PILOT PUMP S.E.C. TYPE 46 (4" or 101,6 mm pilot)	A30-10-21320	312-5053-202
5 k	30 PAD PILOT MOTOR S.E.C. TYPE 00	A30-10-41100	312-5013-401
5 L	30 6 BOLT ROUND WITH 2.625" or 66,67 mm PILOT MOTOR S.E.C. TYPE 05	A30-10-41650	312-5043-601
5 m	30 4 BOLT B PILOT MOTOR S.E.C. TYPE 42 (4" or 101,6 mm pilot)	A30-10-41420	312-5033-601
5 n	30 4 BOLT C PILOT MOTOR S.E.C. TYPE 78 (5" or 127 mm pilot)	A30-10-41430	312-5033-402
5 o	30 2 BOLT A PILOT MOTOR S.E.C. TYPE 94 (3 1/4" or 82,55 mm pilot)	A30-10-41210	312-5023-405
5 p	30 2 BOLT B PILOT MOTOR S.E.C. TYPE 97 (4" or 101,6 mm pilot)	A30-10-41220	312-5023-402
5 q	30 2/4 BOLT B PILOT MOTOR S.E.C. TYPE 46 (4" or 101,6 mm pilot)	A30-10-41320	312-5053-402
6 a	CHECK VALVE MOTOR	A00-75-11000	391-3681-001
6 b	PRESSURE PLUG PUMP	X02-03-32110	391-2286-004
7	RING SEAL	X81-76-02706	391-2585-006
8	ROLLER BEARING (Ø1.687" O.D.)	X03-25-12743	391-0381-068
9	PUMP & MOTOR THRUST PLATE	A30-70-10000	391-2185-013
10	POCKET SEAL	X85-11-00002	391-2882-086
11 a	SHAFT & GEAR TYPE 30 (0.875" Ø x 1/4" x 3/8" x 1" key)	A30-50-XX125	312-29XX-730
11 b	SHAFT & GEAR TYPE 25 ( 0.875" Ø - 13-Tooth spline)	A30-50-XX225	312-29XX-230
11 c	SHAFT & GEAR TYPE 43 (1.00" Ø x 1/4" x 3/8" x 1 1/4" key)	A30-50-XX135	312-29XX-740
11 d	SHAFT & GEAR TYPE 66 TYPE 2 (0.875" Ø x 1/4" x 3/8" x 1" key)	A30-50-XX126	312-29XX-930
11 e	SHAFT & GEAR TYPE 65 TYPE 2 ( 0.875" Ø - 13-Tooth spline)	A30-50-XX226	312-29XX-430
12	PUMP & MOTOR HOUSING GASKET	X85-11-10104	391-2884-050
13	PUMP & MOTOR GEAR HOUSING	A31-32-XX000	312-80XX-100
14 a	MOTOR BEARING CARRIER BLANK	A30-40-00000	312-7300-100
14 b	PUMP BEARING CARRIER WITH COMMON PASSAGE	A30-40-20000	312-7373-100
15	CONNECTING SHAFT	A30-50-00500	312-1133-001
16	GEAR SET ONLY	A30-50-XX000	312-28XX-000
17 a	PUMP & MOTOR PORT END COVER	A30-22-00000	312-3200-100
17 b	30 PUMP & MOTOR PORT END COVER LARGER PORTING	A30-27-00000	312-3400-100
17 c	30/30 PIGGY BACK PORT END COVER	A01-22-03000	312-5029-213
18	FLAT WASHER	X45-10-17005	391-3784-028
19	BOLTS / STUDS	See page	Fasteners
20	HEX NUT	X42-11-16000	391-1451-076
21 a	CONTINENTAL SHAFT TYPE 30 (0.875" Ø x 1/4" x 3/8" x 1" key)	A30-50-00121	312-1500-300
21 b	CONTINENTAL SHAFT TYPE 30 Long (0.875" Ø x 1/4" x 3/8" x 1" key)	A30-50-00124	312-1135-192
21 c	CONTINENTAL SHAFT TYPE 7 (1.250" Ø - 14-tooth spline, Continental only)	A30-50-00241	312-1135-133
21 d	CONTINENTAL SHAFT TYPE 25 ( 0.875" Ø - 13-Tooth spline)	A30-50-00221	312-1135-138
21 e	CONTINENTAL SHAFT TAPERED TYPE 32 (Clutch pump shaft with woodruff key)	SPECIAL ORDER	312-1500-001
21 f	CONTINENTAL SHAFT TYPE 43 (1.00" Ø x 1/4" x 3/8" x 1 1/4" key)	A30-50-00131	312-1500-400
21 g	CONTINENTAL SHAFT TYPE 43 Long (1.00" Ø x 1/4" x 3/8" x 1 1/4" key)	A30-50-00134	312-1135-193
21 h	CONTINENTAL SHAFT TYPE 12 (0.750" Ø x 3/16" x 3/16" x 1 9/16" key)	A30-50-00169	312-1135-152
21 i	CONTINENTAL SHAFT THREADED & KEYED END TYPE 15 (5/8"-18UNF + 1/4" x 3/8" x 7/8"key)	A30-50-00127	312-1135-171
21 j	CONTINENTAL SHAFT TYPE 95 (0.625" Ø x 9-tooth spline)	A30-50-00211	312-1000-200
22	CONTINENTAL SHAFT BRG. RETAINER SNAP RING	X05-02-28110	391-2685-011
23	CONTINENTAL SHAFT BRG. RETAINER	A20-60-20000	312-0100-002
Not Shown	SEAL RETAINER FOR 50/50& 30/50 PIGGY BACK PUMP S.E.C.	A30-60-10001	391-2584-063
Not Shown	SEAL RETAINER O RING FOR PIGGY BACK PUMP S.E.C.	X81-11-04704	391-2881-124
Not Shown	SEAL RETAINER O RING FOR PIGGY BACK PUMP S.E.C.	X81-11-05704	391-2881-120

# 31/3100 SERIES





# 31/3100 SERIES

1	SHAFT BEARING SNAP RING	X05-03-56200	391-2686-063
2 a	INPUT SHAFT BEARING	X03-16-12552	391-0381-040
2 b	BEARING SPACER ( IN PLACE OF SHAFT BEARING )	A30-92-38520	391-3383-069
3	MOTOR SEAL RETAINER USED WITH SHAFT BEARING OR SPACER	A20-60-10000	391-3381-040
4 a	PUMP LIP SEAL FOR CONTINENTAL SHAFT ONLY	X89-11-02508	391-2883-107
4 b	PUMP LIP SEAL FOR PIGGY BACK 76/31 SHAFT END COVER	X83-11-03308	391-2883-103
4 c	MOTOR LIP SEAL	X83-36-02709	391-2883-119
4 d	MOTOR LIP SEAL FOR CONTINENTAL SHAFT ONLY	X83-36-02509	391-2883-126
5 a	31 PAD PILOT PUMP S.E.C. TYPE 00	A31-10-21100	312-5017-201
5 b	31 6 BOLT ROUND WITH 2.625" or 66,67 mm PILOT PUMP S.E.C. TYPE 05	A31-10-21650	312-5047-201
5 c	31 4 BOLT B PILOT PUMP S.E.C. TYPE 42 (4" or 101,6 mm pilot)	A31-10-21420	312-5037-201
5 d	31 4 BOLT C PILOT PUMP S.E.C. TYPE 78 (5" or 127 mm pilot)	A31-10-21430	312-5037-202
5 e	31 2 BOLT A PILOT PUMP S.E.C. TYPE 94 (3 1/4" or 82,55 mm pilot)	A31-10-21210	312-5027-204
5 f	31 2 BOLT B PILOT PUMP S.E.C. TYPE 97 (4" or 101,6 mm pilot)	A31-10-21220	312-5027-201
5 g	31 2 BOLT B (TYPE 2) PILOT PUMP S.E.C. TYPE 96 (4" or 101,6 mm pilot)	A31-10-22220	312-5027-205
5 h	31/51 SHAFT END COVER FOR PIGGYBACK UNITS TYPE 91	A05-10-21500	312-5027-208
5 i	76/31 SHAFT END COVER FOR PIGGYBACK UNITS TYPE 92	A08-10-21500	312-5027-209
5 j	31 2/4 BOLT B PILOT PUMP S.E.C. TYPE 46 (4" or 101,6 mm pilot)	A30-10-21320	312-5053-202
5 k	31 PAD PILOT MOTOR S.E.C. TYPE 00	A31-10-41100	312-5017-401
5 L	31 6 BOLT ROUND WITH 2.625" or 66,67 mm PILOT MOTOR S.E.C. TYPE 05	A31-10-41650	312-5047-401
5 m	31 4 BOLT B PILOT MOTOR S.E.C. TYPE 42 (4" or 101,6 mm pilot)	A31-10-41420	312-5037-401
5 n	31 4 BOLT C PILOT MOTOR S.E.C. TYPE 78 (5" or 127 mm pilot)	A31-10-41430	312-5037-402
5 o	31 2 BOLT A PILOT MOTOR S.E.C. TYPE 94 (3 1/4" or 82,55 mm pilot)	A31-10-41210	312-5027-404
5 p	31 2 BOLT B PILOT MOTOR S.E.C. TYPE 97 (4" or 101,6 mm pilot)	A31-10-41220	312-5027-401
5 q	31 2/4 BOLT B PILOT MOTOR S.E.C. TYPE 46 (4" or 101,6 mm pilot)	A30-10-41320	312-5053-402
6 a	CHECK VALVE MOTOR	A00-75-11000	391-3681-001
6 b	PRESSURE PLUG PUMP	X02-03-32110	391-2286-004
7	RING SEAL	X81-76-02706	391-2585-006
8	ROLLER BEARING (Ø1.687" O.D.)	X03-25-12743	391-0381-068
9 a	PUMP THRUST PLATE	A31-70-20000	391-2185-031
9 b	MOTOR THRUST PLATE	A30-70-10000	391-2185-013
10	POCKET SEAL	X85-11-00002	391-2882-086
11 a	SHAFT & GEAR TYPE 30 (0.875" Ø x 1/4" x 3/8" x 1" key)	A30-50-XX125	312-29XX-730
11 b	SHAFT & GEAR TYPE 25 ( 0.875" Ø - 13-Tooth spline)	A30-50-XX225	312-29XX-230
11 c	SHAFT & GEAR TYPE 43 (1.00" Ø x 1/4" x 1/4" x 1 1/4" key)	A30-50-XX135	312-29XX-740
11 d	SHAFT & GEAR TYPE 66 TYPE 2 (0.875" Ø x 1/4" x 3/8" x 1" key)	A30-50-XX126	312-29XX-930
11 e	SHAFT & GEAR TYPE 65 TYPE 2 ( 0.875" Ø - 13-Tooth spline)	A30-50-XX226	312-29XX-430
12	PUMP & MOTOR HOUSING GASKET	X85-11-10104	391-2884-050
13	PUMP & MOTOR GEAR HOUSING	A31-32-XX000	312-82XX-100
14 a	31 MOTOR BEARING CARRIER BLANK	A31-40-00000	312-7740-100
14 b	31 PUMP BEARING CARRIER WITH COMMON PASSAGE	A31-40-20000	312-7723-100
15	CONNECTING SHAFT	A30-50-00500	312-1133-001
16	GEAR SET ONLY	A30-50-XX000	312-28XX-000
17	GEAR HOUSING DOWEL PIN	A00-94-11025	391-2082-032
18 a	31 PUMP & MOTOR PORT END COVER	A31-22-00000	312-3120-100
18 b	31 PUMP & MOTOR PORT END COVER LARGER PORTING	A31-27-00000	312-3420-100
18 c	31/31 PIGGY BACK PORT END COVER	A04-22-03000	312-5027-212
19	FLAT WASHER	X45-10-17005	391-3784-028
20	BOLTS / STUDS (5/8" UNC)	See page	Fasteners
21	HEX NUT (5/8" UNC)	X42-11-16000	391-1451-076
22 a	CONTINENTAL SHAFT TYPE 30 (0.875" Ø x 1/4" x 3/8" x 1" key)	A30-50-00121	312-1500-300
22 b	CONTINENTAL SHAFT TYPE 30 Long (0.875" Ø x 1/4" x 3/8" x 1" key)	A30-50-00124	312-1135-192
22 c	CONTINENTAL SHAFT TYPE 7 (1.250" Ø - 14-tooth spline, Continental only)	A30-50-00241	312-1135-133
22 d	CONTINENTAL SHAFT TYPE 25 ( 0.875" Ø - 13-Tooth spline)	A30-50-00221	312-1135-138
22 e	CONTINENTAL SHAFT TAPERED TYPE 32 (Clutch pump shaft with woodruff key)	SPECIAL ORDER	312-1500-001
22 f	CONTINENTAL SHAFT TYPE 43 (1.00" Ø x 1/4" x 3/8" x 1 1/4" key)	A30-50-00131	312-1500-400
22 g	CONTINENTAL SHAFT TYPE 43 Long (1.00" Ø x 1/4" x 3/8" x 1 1/4" key)	A30-50-00134	312-1135-193
22 h	CONTINENTAL SHAFT TYPE 12 (0.750" Ø x 3/16" x 3/16" 1 9/16" key)	A30-50-00169	312-1135-152
22 i	CONTINENTAL SHAFT THREADED & KEYED END TYPE 15 (5/8"-18UNF + 1/4" x 3/8" x 7/8"key)	A30-50-00127	312-1135-171
22 j	CONTINENTAL SHAFT TYPE 95 (0.625" Ø x 9-tooth spline)	A30-50-00211	312-1000-200
23	CONTINENTAL SHAFT BRG. RETAINER	A20-60-20000	312-0100-002
24	CONTINENTAL SHAFT BRG. RETAINER SNAP RING	X05-02-78110	391-2685-011







