

HYDROPOWER SERVICES BV

Zwanenburgerdijk 330 a

1161 NN Zwanenburg

The Netherlands

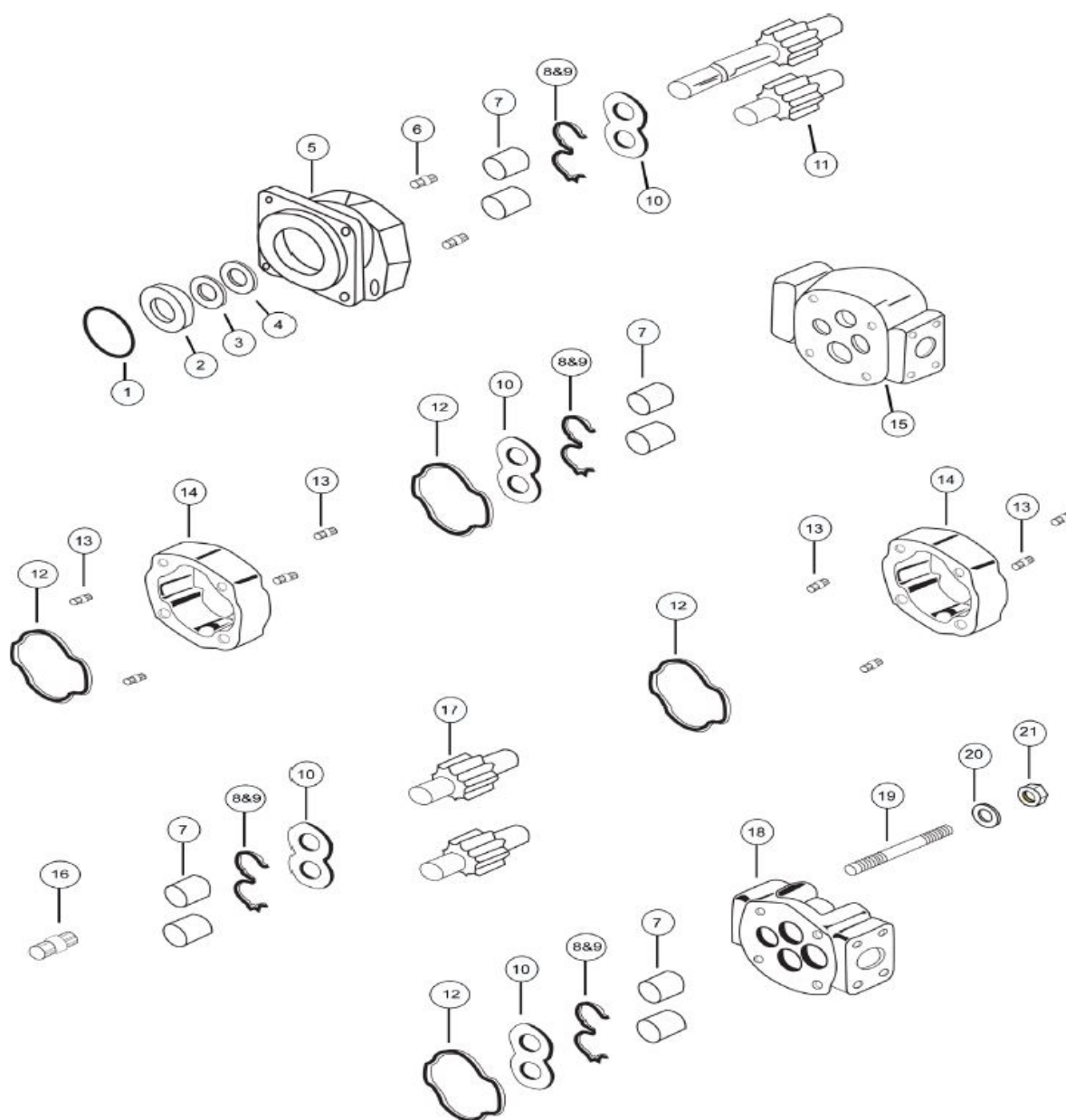
Tel. 0653118328

[e-mail info@hydropower.nl](mailto:info@hydropower.nl)

[Website www.hydropower.nl](http://www.hydropower.nl)



P/M 315



1	SEAL RETAINER SNAP RING MOTOR ONLY	X05-01-56190	391-2686-016
2	SHAFT BEARING (USED IN TYPE * 90 S.E.C.)	X03-16-12251	391-0381-105
3	SEAL RETAINER FOR MOTORS ONLY	A32-60-10000	391-3384-313
4 a	PUMP LIP SEAL	X83-11-02406	391-2883-151
4 b	MOTOR LIP SEAL	X83-36-02406	391-2883-156
5 a	2 BOLT A PILOT PUMP S.E.C. WITHOUT BUSHING TYPE 93 (3 1/4" or 82,55 mm pilot)	A32-10-21211	326-5029-204
5 b	2 BOLT A PILOT PUMP S.E.C. WITH BUSHING TYPE 93 (3 1/4" or 82,55 mm pilot)	A32-10-21212	326-5129-204
5 c	2 BOLT B PILOT PUMP S.E.C. WITHOUT BUSHING TYPE 96 (4" or 101,6 mm pilot)	A32-10-21221	326-5029-203
5 d	2 BOLT B PILOT PUMP S.E.C. WITH BUSHING TYPE 96 (4" or 101,6 mm pilot)	A32-10-21222	326-5129-203
5 e	2 BOLT A PILOT MOTOR S.E.C. WITHOUT BUSHING TYPE 93 (3 1/4" or 82,55 mm pilot)	A32-10-41211	326-5029-404
5 f	2 BOLT A PILOT MOTOR S.E.C. WITH BUSHING TYPE 93 (3 1/4" or 82,55 mm pilot)	A32-10-41213	326-5129-404
5 g	2 BOLT B PILOT MOTOR S.E.C. WITHOUT BUSHING TYPE 96 (4" or 101,6 mm pilot)	A32-10-41221	326-5029-403
5 h	2 BOLT B PILOT MOTOR S.E.C. WITH BUSHING TYPE 96 (4" or 101,6 mm pilot)	A32-10-41222	326-5129-403
5 i	4 BOLT 72 X 100 mm / 80mm PILOT WITHOUT BUSHING TYPE 90	A32-10-21491	326-5033-205
5 j	4 BOLT 72 X 100 mm / 80mm PILOT WITH BUSHING TYPE 90	A32-10-21492	326-5133-205
5 k	PAD MOUNT WITHOUT BUSHING TYPE 95	N/A	326-5016-202
5 L	PAD MOUNT WITH BUSHING TYPE 95	N/A	326-5116-202
5 m	2 BOLT A PILOT SEC TYPE 89 W/ SNAP RING	A32-10-41212	326-5029-426
6 a	CHECK VALVE MOTOR	A00-75-11000	391-3681-001
6 b	PRESSURE PLUG PUMP (may not be required)	X02-03-32110	391-2286-004
8	PUMP BUNA SEAL	A32-82-11030	391-2883-168
9	PUMP NYLON BACKUP SEAL	A32-82-46010	391-2883-169
Not Shown	MOTOR NYLON BACKUP SEAL	A32-82-46030	391-2881-995
Not Shown	MOTOR THRUST PLATE SIDE SEAL	A32-82-14022	391-2881-997
Not Shown	MOTOR THRUST PLATE END SEAL	A32-82-14021	391-2881-996
10 a	PUMP THRUST PLATE	A32-70-20000	391-2185-063
10 b	MOTOR THRUST PLATE	A32-70-10000	391-2185-070
11 a	SHAFT & GEAR SAE "A" 0.625" dia. KEYED TYPE 97	A32-50-XX111	326-29XX-920
11 b	SHAFT & GEAR SAE "A" 9 TOOTH SPLINE 0.609" maj. dia. TYPE 96	A32-50-XX211	326-29XX-420
11 c	SHAFT & GEAR SAE "B" 0.875" dia. KEYED TYPE 66	A32-50-XX126	326-29XX-930
11 d	SHAFT & GEAR SAE "B" 13-TOOTH SPLINE 0.858" maj. dia. TYPE 65	A32-50-05226	326-29XX-430
11 e	SHAFT & GEAR TAPERED M12 X 1.5 THD & 3X5 KEYED TYPE 60	N/A	326-29XX-701
11 f	SHAFT & GEAR TAPERED 5/16 INTERNAL THD #6 WDF KEY TYPE 56	N/A	326-29XX-604
12 a	PUMP HOUSING GASKET	X85-11-08203	391-2881-968
12 b	MOTOR HOUSING GASKET	X85-11-08903	391-2881-429
13	HOUSING DOWELL PIN	A00-94-10616	391-2082-071
14 a	PUMP GEAR HOUSING	A32-33-XX000	326-81XX-100
14 b	MOTOR GEAR HOUSING	A32-32-XX000	326-82XX-100
15 a	315 BEARING CARRIER 1 OUTLET WITHOUT BUSHING	A32-40-21000	326-7100-100
15 b	315 BEARING CARRIER 1 OUTLET WITH BUSHING	A32-40-31000	326-7600-100
15 c	315 BEARING CARRIER 2 OUTLET WITHOUT BUSHING	A32-40-22000	326-7300-100
15 d	315 BEARING CARRIER 2 OUTLET WITH BUSHING	A32-40-32000	326-7800-100
16	CONNECTING SHAFT	A32-50-00500	326-1133-001
17	GEAR SET ONLY	A32-50-XX000	326-28XX-000
18 a	315 PUMP P.E.C. NO PORTING WITHOUT BUSHING	A32-23-00000	326-3000-100
18 b	315 PUMP P.E.C. NO PORTING WITH BUSHING	A32-23-10000	326-3100-100
18 c	315 PUMP P.E.C. SIDE PORTING TYPE WITHOUT BUSHING	A32-23-01000	326-3030-100
18 d	315 PUMP P.E.C. SIDE PORTING TYPE WITH BUSHING	A32-23-11000	326-3130-100
18 e	315 PUMP P.E.C. SIDE & REAR PORTING TYPE WITHOUT BUSHING	A32-26-18000	326-3133-100
18 f	315 PUMP P.E.C. SIDE & REAR PORTING TYPE WITH BUSHING	A32-23-08000	326-3033-100
18 g	315 MOTOR P.E.C. PORTING TYPE WITHOUT BUSHING	A32-22-02000	326-3020-100
18 h	315 MOTOR P.E.C. PORTING TYPE WITH BUSHING	A32-22-12000	326-3120-100
19	BOLTS / STUDS (1/2"-UNC)	See page	Fasteners
20	FLAT WASHER (1/2")	X45-19-13005	391-3782-132
21	HEX NUT (1/2"-UNC)	X42-11-13011	391-1451-051

