

# **HYDROPOWER SERVICES BV**

Zwanenburgerdijk 330 a

1161 NN Zwanenburg

The Netherlands

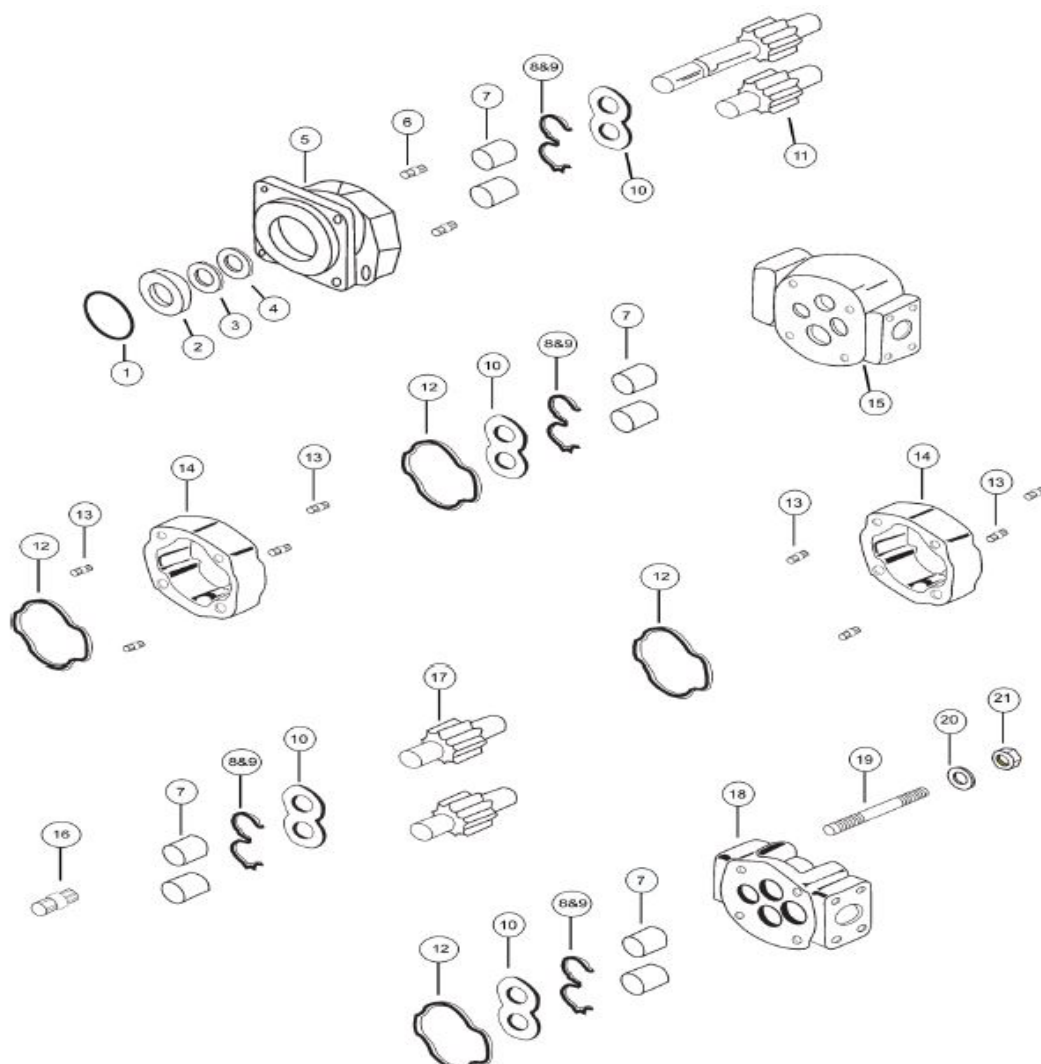
Tel. 0653118328

[e-mail info@hydropower.nl](mailto:info@hydropower.nl)

[Website www.hydropower.nl](http://www.hydropower.nl)



P/M 330



1	SHAFT BRG. SNAP RING	X05-03-56200	391-2686-063
2 a	INPUT SHAFT BRG.	X03-16-12552	391-0381-040
2 b	SPACER IN PLACE OF SHAFT BEARING	A30-92-38520	391-3383-069
3	SEAL RETAINER FOR MOTORS ONLY	A20-60-10000	391-3381-040
4 a	PUMP LIP SEAL	X83-11-02708	391-2883-058
4 b	MOTOR LIP SEAL	X83-36-02709	391-2883-119
4 c	PUMP LIP SEAL FOR CONTINENTAL SHAFT ONLY	X89-11-02508	391-2883-107
4 d	MOTOR LIP SEAL FOR CONTINENTAL SHAFT ONLY	X83-36-02509	391-2883-126
5 a	4 BOLT B PILOT PUMP S.E.C. WITHOUT BUSHING TYPE 42 (4" or 101,6 mm pilot)	A33-10-21421	324-5033-201
5 b	4 BOLT B PILOT PUMP S.E.C. WITH BUSHING TYPE 42 (4" or 101,6 mm pilot)	A33-10-21422	324-5133-201
5 c	4 BOLT C PILOT PUMP S.E.C. WITHOUT BUSHING TYPE 78 (5" or 127 mm pilot)	A33-10-21431	324-5033-202
5 d	4 BOLT C PILOT PUMP S.E.C. WITH BUSHING TYPE 78 (5" or 127 mm pilot)	A33-10-21432	324-5133-202
5 e	2 BOLT B PILOT PUMP S.E.C. WITHOUT BUSHING TYPE 97 (4" or 101,6 mm pilot)	A33-10-21221	324-5023-201
5 f	2 BOLT B PILOT PUMP S.E.C. WITH BUSHING TYPE 97 (4" or 101,6 mm pilot)	A33-10-21222	324-5123-201
5 g	2 & 4 BOLT B PILOT PUMP S.E.C. WITHOUT BUSHING TYPE 46 (4" or 101,6 mm pilot)	A33-10-21321	324-5053-201
5 h	2 & 4 BOLT B PILOT PUMP S.E.C. WITH BUSHING TYPE 46 (4" or 101,6 mm pilot)	A33-10-21322	324-5153-201
5 i	4 BOLT B PILOT MOTOR S.E.C. WITHOUT BUSHING TYPE 42 (4" or 101,6 mm pilot)	A33-10-41421	324-5033-401
5 j	4 BOLT B PILOT MOTOR S.E.C. WITH BUSHING TYPE 42 (4" or 101,6 mm pilot)	A33-10-41422	324-5133-401
5 k	4 BOLT C PILOT MOTOR S.E.C. WITHOUT BUSHING TYPE 78 (5" or 127 mm pilot)	A33-10-41431	324-5033-402
5 L	4 BOLT C PILOT MOTOR S.E.C. WITH BUSHING TYPE 78 (5" or 127 mm pilot)	A33-10-41432	324-5133-402
5 m	2 BOLT B PILOT MOTOR S.E.C. WITHOUT BUSHING TYPE 97 (4" or 101,6 mm pilot)	A33-10-41221	324-5023-401
5 n	2 BOLT B PILOT MOTOR S.E.C. WITH BUSHING TYPE 97 (4" or 101,6 mm pilot)	A33-10-41222	324-5123-401
5 o	2 & 4 BOLT B PILOT MOTOR S.E.C. WITHOUT BUSHING TYPE 46 (4" or 101,6 mm pilot)	A33-10-41320	324-5053-401
5 p	2 & 4 BOLT B PILOT MOTOR S.E.C. WITH BUSHING TYPE 46 (4" or 101,6 mm pilot)	A33-10-41322	324-5153-401
6 a	CHECK VALVE MOTOR	A00-75-11000	391-3681-001
6 b	PRESSURE PLUG PUMP (may not be required)	X02-03-32110	391-2286-004
7	SHAFT BUSHING	X03-00-32730	391-0482-306
8	PUMP BUNA SEAL	A33-82-11030	391-2883-166
9	PUMP NYLON BACKUP SEAL	A33-82-46010	391-2883-167
Not Shown	MOTOR NYLON BACKUP SEAL	A33-82-46030	391-2881-929
Not Shown	MOTOR THRUST PLATE SIDE SEAL	A33-82-14022	391-2881-931
Not Shown	MOTOR THRUST PLATE END SEAL	A33-82-14021	391-2881-930
10 a	PUMP THRUST PLATE	A33-70-20000	391-2185-056
10 b	MOTOR THRUST PLATE	A33-70-10000	391-2185-065
11 a	SHAFT & GEAR SET 13 TOOTH SPLINE 0.858" maj. dia TYPE 25	A33-50-XX225	324-29XX-230
11 b	SHAFT & GEAR SET 0.9984" dia. KEYED (1/4" x 3/8" x 1 1/4") TYPE 43	A33-50-XX135	324-29XX-740
11 c	SHAFT & GEAR SET 15 TOOTH SPLINE 0.983" maj. dia TYPE 98	A33-50-XX231	324-29XX-240
12 a	PUMP HOUSING GASKET	X85-11-10104	391-2884-050
12 b	MOTOR HOUSING GASKET	X85-11-09803	391-2884-076
13	HOUSING DOWELL PIN	A00-94-11025	391-2082-032
14 a	PUMP GEAR HOUSING	A33-33-XX000	324-81XX-100
14 b	MOTOR GEAR HOUSING	A33-32-XX000	324-82XX-100
15 a	330 BEARING CARRIER BLANK WITHOUT BUSHING	A33-40-00000	324-7200-100
15 b	330 BEARING CARRIER BLANK WITH BUSHING	A33-40-10000	324-7700-100
15 c	330 BEARING CARRIER 1 OUTLET WITHOUT BUSHING	A33-40-21000	324-7100-100
15 d	330 BEARING CARRIER 1 OUTLET WITH BUSHING	A33-40-31000	324-7600-100
15 e	330 BEARING CARRIER 2 OUTLET WITHOUT BUSHING	A33-40-22000	324-7300-100
15 f	330 BEARING CARRIER 2 OUTLET WITH BUSHING	A33-40-32000	324-7800-100
15 g	330/315 BEARING CARRIER CW WITHOUT BUSHING	A33-40-23000	324-3050-100
15 h	330/315 BEARING CARRIER CW WITH BUSHING	A33-40-33000	324-3150-100
15 i	330/315 BEARING CARRIER CCW WITHOUT BUSHING	A33-40-24000	324-3060-100
15 j	330/315 BEARING CARRIER CCW WITH BUSHING	A33-40-34000	324-3160-100
16 a	CONNECTING SHAFT	A33-50-00500	324-1133-001
16 b	PIGGYBACK CONNECTING SHAFT PHASE 2	A81-50-00500	324-1133-004
17	GEAR SET ONLY	A33-50-XX000	324-28XX-000
18 a	330 PUMP P.E.C. NO PORTING WITHOUT BUSHING	A33-23-00000	324-3000-100
18 b	330 PUMP P.E.C. NO PORTING WITH BUSHING	A33-23-10000	324-3100-100
18 c	330 P.E.C. NO PORTING WITHOUT BUSHING CHECK VALVE REQ.	A33-25-00000	324-3000-101
18 d	330 P.E.C. NO PORTING WITH BUSHING CHECK VALVE REQ.	A33-25-10000	324-3100-101



