

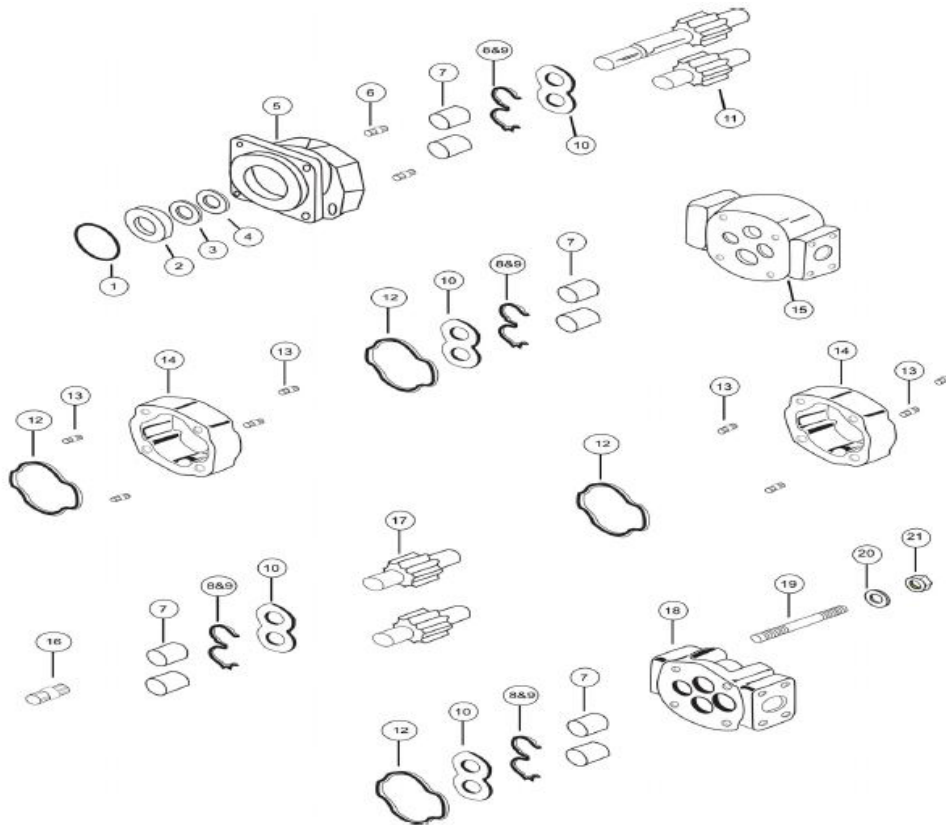
Hydropower Services BV

Zwanenburgerdijk 330 a
1161 NN Zwanenburg
The Netherlands
Tel. 0653118328

e-mail info@hydropower.nl
Website www.hydropower.nl



M/P 365



1	SHAFT BRG. SNAP RING	X05-01-88280	391-2686-025
2 a	INPUT SHAFT BRG.	X03-16-13580	391-0381-078
2 b	SEAL RETAINER & SPACER IN PLACE OF SHAFT BRG.	A36-60-10002	391-3383-099
3	SEAL RETAINER FOR MOTORS ONLY	A36-60-10001	391-2584-119
4 a	PUMP LIP SEAL	X83-11-03508	391-2883-052
4 b	MOTOR LIP SEAL	X83-36-03510	391-2883-094
5 a	4 BOLT B MOUNT PUMP S.E.C. WITHOUT BUSHING TYPE 42 (4" or 101,6 mm pilot)	A36-10-21421	322-5033-201
5 b	4 BOLT B MOUNT PUMP S.E.C. WITH BUSHING TYPE 42 (4" or 101,6 mm pilot)	A36-10-21422	322-5133-201
5 c	4 BOLT C MOUNT PUMP S.E.C. WITHOUT BUSHING TYPE 78 (5" or 127 mm pilot)	A36-10-21431	322-5033-202
5 d	4 BOLT C MOUNT PUMP S.E.C. WITH BUSHING TYPE 78 (5" or 127 mm pilot)	A36-10-21432	322-5133-202
5 e	2 BOLT B MOUNT PUMP S.E.C. WITHOUT BUSHING TYPE 97 (4" or 101,6 mm pilot)	A36-10-21221	322-5023-201
5 f	2 BOLT B MOUNT PUMP S.E.C. WITH BUSHING TYPE 97 (4" or 101,6 mm pilot)	A36-10-21222	322-5123-201
5 g	2 BOLT C MOUNT PUMP S.E.C. WITHOUT BUSHING TYPE 98 (5" or 127 mm pilot)	A36-10-21231	322-5023-202
5 h	2 BOLT C MOUNT PUMP S.E.C. WITH BUSHING TYPE 98 (5" or 127 mm pilot)	A36-10-21232	322-5123-202
5 i	4 BOLT B MOUNT MOTOR S.E.C. WITHOUT BUSHING TYPE 42 (4" or 101,6 mm pilot)	A36-10-41421	322-5033-401
5 j	4 BOLT B MOUNT MOTOR S.E.C. WITH BUSHING TYPE 42 (4" or 101,6 mm pilot)	A36-10-41422	322-5133-401
5 k	4 BOLT C MOUNT MOTOR S.E.C. WITHOUT BUSHING TYPE 78 (5" or 127 mm pilot)	A36-10-41431	322-5033-402
5 L	4 BOLT C MOUNT MOTOR S.E.C. WITH BUSHING TYPE 78 (5" or 127 mm pilot)	A36-10-41432	322-5133-402
5 m	2 BOLT B MOUNT MOTOR S.E.C. WITHOUT BUSHING TYPE 97 (4" or 101,6 mm pilot)	A36-10-41221	322-5023-401
5 n	2 BOLT B MOUNT MOTOR S.E.C. WITH BUSHING TYPE 97 (4" or 101,6 mm pilot)	A36-10-41222	322-5123-401
5 o	2 BOLT C MOUNT MOTOR S.E.C. WITHOUT BUSHING TYPE 98 (5" or 127 mm pilot)	A36-10-41231	322-5023-402
5 p	2 BOLT C MOUNT MOTOR S.E.C. WITH BUSHING TYPE 98 (5" or 127 mm pilot)	A36-10-41232	322-5123-402
6 a	CHECK VALVE MOTOR (Not required on all models)	A00-75-11000	391-3681-001
6 b	PRESSURE PLUG PUMP (Not required on all models)	X02-03-32110	391-2286-004
7	SHAFT BUSHING	X03-00-33842	391-0482-307
8	PUMP BUNA SEAL	A36-82-13050	391-2883-176
9	PUMP NYLON BACKUP SEAL	A36-82-46020	391-2883-177
Not Shown	MOTOR NYLON BACKUP SEAL	A36-82-46030	391-2885-071

Not Shown	MOTOR THRUST PLATE SIDE SEAL	A36-82-14021	391-2885-069
Not Shown	MOTOR THRUST PLATE END SEAL	A36-82-14022	391-2885-070
10 a	PUMP THRUST PLATE	A36-70-20000	391-2185-055
10 b	MOTOR THRUST PLATE	A36-70-10000	391-2185-060
11 a	SHAFT & GEAR 14 TOOTH SPLINE 1.228" maj. dia. TYPE 7	A36-50-XX245	322-29XX-250
11 b	SHAFT & GEAR 1.250" KEYED (5/16") TYPE 11	A36-50-XX145	322-29XX-750
11 c	SHAFT & GEAR SET 13 TOOTH SPLINE 0.858" maj. dia. TYPE 25	A36-50-XX225	322-29XX-230
12 a	PUMP HOUSING GASKET	X85-11-12703	391-2884-052
12 b	MOTOR HOUSING GASKET	X85-11-12303	391-2884-023
13 a	PUMP HOUSING DOWELL PIN	A00-94-22119	391-2082-062
13 b	MOTOR HOUSING DOWELL PIN	A00-94-22408	391-2082-069
14 a	PUMP GEAR HOUSING	A36-33-XX000	322-81XX-100
14 b	MOTOR GEAR HOUSING	A36-32-XX000	322-82XX-100
15 a	365 BEARING CARRIER 1 OUTLET WITHOUT BUSHING	A36-40-21000	322-7100-100
15 b	365 BEARING CARRIER 1 OUTLET WITH BUSHING	A36-40-31000	322-7600-100
15 c	365 BEARING CARRIER 2 OUTLET WITHOUT BUSHING	A36-40-22000	322-7300-100
15 d	365 BEARING CARRIER 2 OUTLET WITH BUSHING	A36-40-32000	322-7800-100
15 e	365 MOTOR BEARING CARRIER BLANK WITHOUT BUSHING	A36-40-00000	322-7200-100
15 f	365 MOTOR BEARING CARRIER BLANK WITH BUSHING	A36-40-10000	322-7700-100
15 g	365/330 BEARING CARRIER CW WITHOUT BUSHING	A36-40-23000	322-3050-100
15 h	365/330 BEARING CARRIER CW WITH BUSHING	A36-40-33000	322-3150-100
15 i	365/330 BEARING CARRIER CCW WITHOUT BUSHING	A36-40-24000	322-3060-100
15 j	365/330 BEARING CARRIER CCW WITH BUSHING	A36-40-34000	322-3160-100
16 a	CONNECTING SHAFT	A36-50-00500	322-1133-001
16 b	PIGGYBACK CONNECTING SHAFT 365/330	A83-50-00500	322-1133-002
17	GEAR SET ONLY	A36-50-XX000	322-28XX-000
18 a	365 PUMP PORT END COVER WITHOUT BUSHING NO PORTING	A36-23-00000	322-3000-100
18 b	365 PUMP PORT END COVER WITH BUSHING NO PORTING	A36-23-10000	322-3100-100
18 c	365 PUMP PORT END COVER WITHOUT BUSHING PORTING TYPE	A36-23-02000	322-3010-100
18 d	365 PUMP PORT END COVER WITH BUSHING PORTING TYPE	A36-23-12000	322-3110-100

18 i	365 P.E.C. TO S.A.E. "A" PILOT CW WITHOUT BUSHING	A36-22-04000	322-3054-099
18 j	365 P.E.C. TO S.A.E. "A" PILOT CW WITH BUSHING	A36-22-14000	322-3154-099
18 k	365 P.E.C. TO S.A.E. "A" PILOT CCW WITHOUT BUSHING	A36-22-05000	322-3064-099
18 L	365 P.E.C. TO S.A.E. "A" PILOT CCW WITH BUSHING	A36-22-17000	322-3164-099
18 m	365 P.E.C. TO S.A.E. "B" PILOT CW WITHOUT BUSHING	A36-23-06000	322-3054-100
18 n	365 P.E.C. TO S.A.E. "B" PILOT CW WITH BUSHING	A36-23-16000	322-3154-100
18 o	365 P.E.C. TO S.A.E. "B" PILOT CCW WITHOUT BUSHING	A36-23-07000	322-3064-100
18 p	365 P.E.C. TO S.A.E. "B" PILOT CCW WITH BUSHING	A36-23-17000	322-3164-100
19	BOLTS / STUDS	See page	Fasteners
20 a	MOTOR FLAT WASHER	X45-10-21004	391-3782-114
20 b	PUMP FLAT WASHER	X45-10-17005	391-3784-028
21 a	PUMP HEX NUT	X42-11-16000	391-1451-076
21 b	MOTOR HEX NUT	X42-11-19016	391-1451-086
Not Shown	CONTINENTAL SHAFT 1.250" KEYED (5/16") TYPE 11	A36-50-00141	322-1500-500
Not Shown	CONTINENTAL SHAFT 14 TOOTH SPLINE 1.228" maj. dia. TYPE 7	A36-50-00241	322-1000-500
Not Shown	CONTINENTAL SHAFT BRG. RETAINER	X45-19-35002	391-3782-158
Not Shown	CONTINENTAL SHAFT BRG. RETAINER SNAP RING	X05-02-38130	391-2685-029
Not Shown	SHAFT KEY FOR TYPE 11 SHAFT	X01-02-80838	391-1781-083
Not Shown	PIGGYBACK CONNECTING SHAFT BEARING	X03-16-13055	391-0381-099
Not Shown	PIGGYBACK CONNECTING SHAFT LIP SEAL	X83-11-03308	391-2883-103
Not Shown	PIGGYBACK CONNECTING SHAFT BEARING SNAP RING	X05-01-61200	391-2686-019
Not Shown	1/4" ORB DRAIN PLUG	X02-03-12060	391-2281-010

