

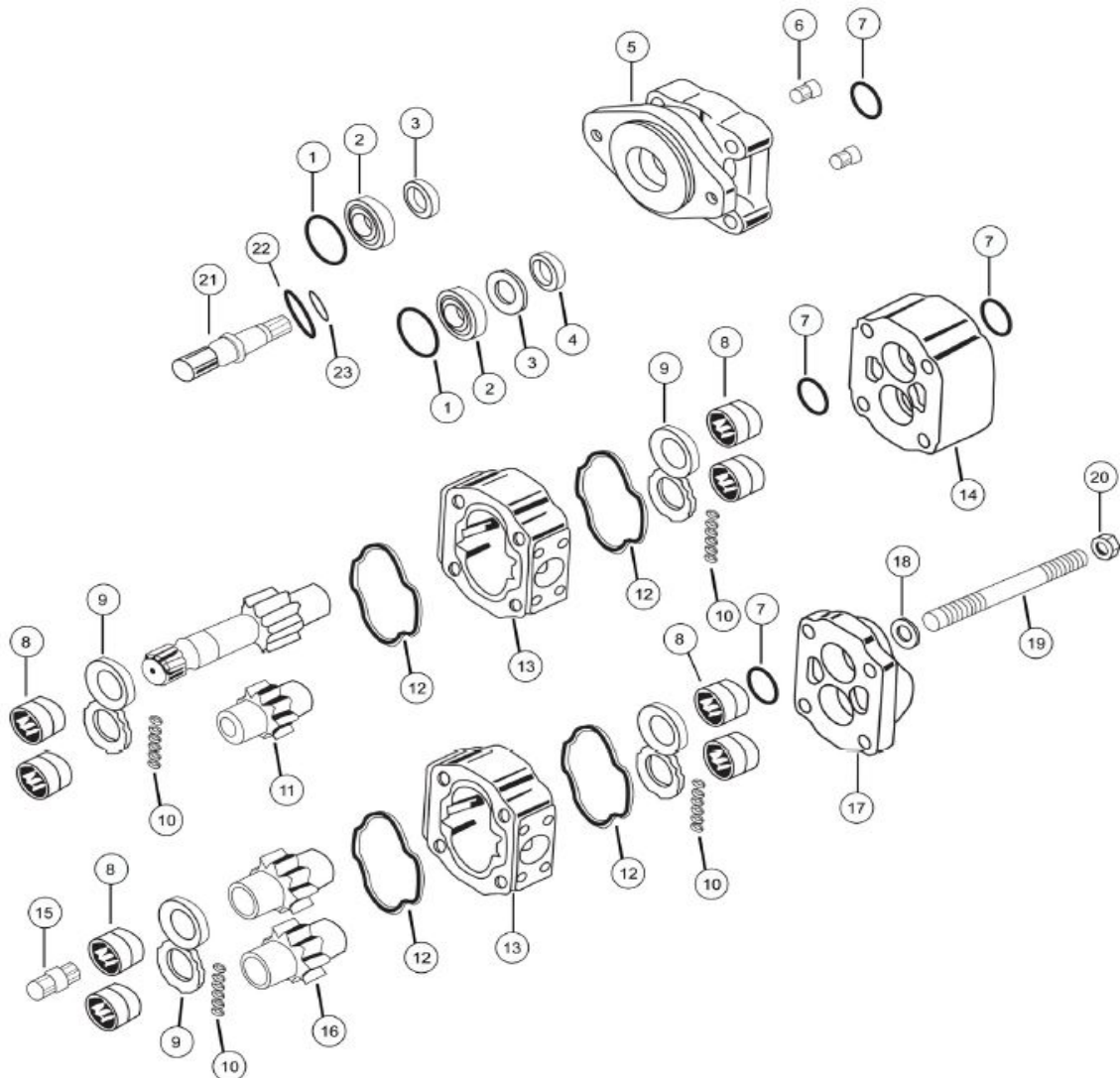
Hydropower Services BV

Zwanenburgerdijk 330 a
1161 NN Zwanenburg
The Netherlands
Tel. 0653118328

[e-mail info@hydropower.nl](mailto:info@hydropower.nl)
[Website www.hydropower.nl](http://www.hydropower.nl)

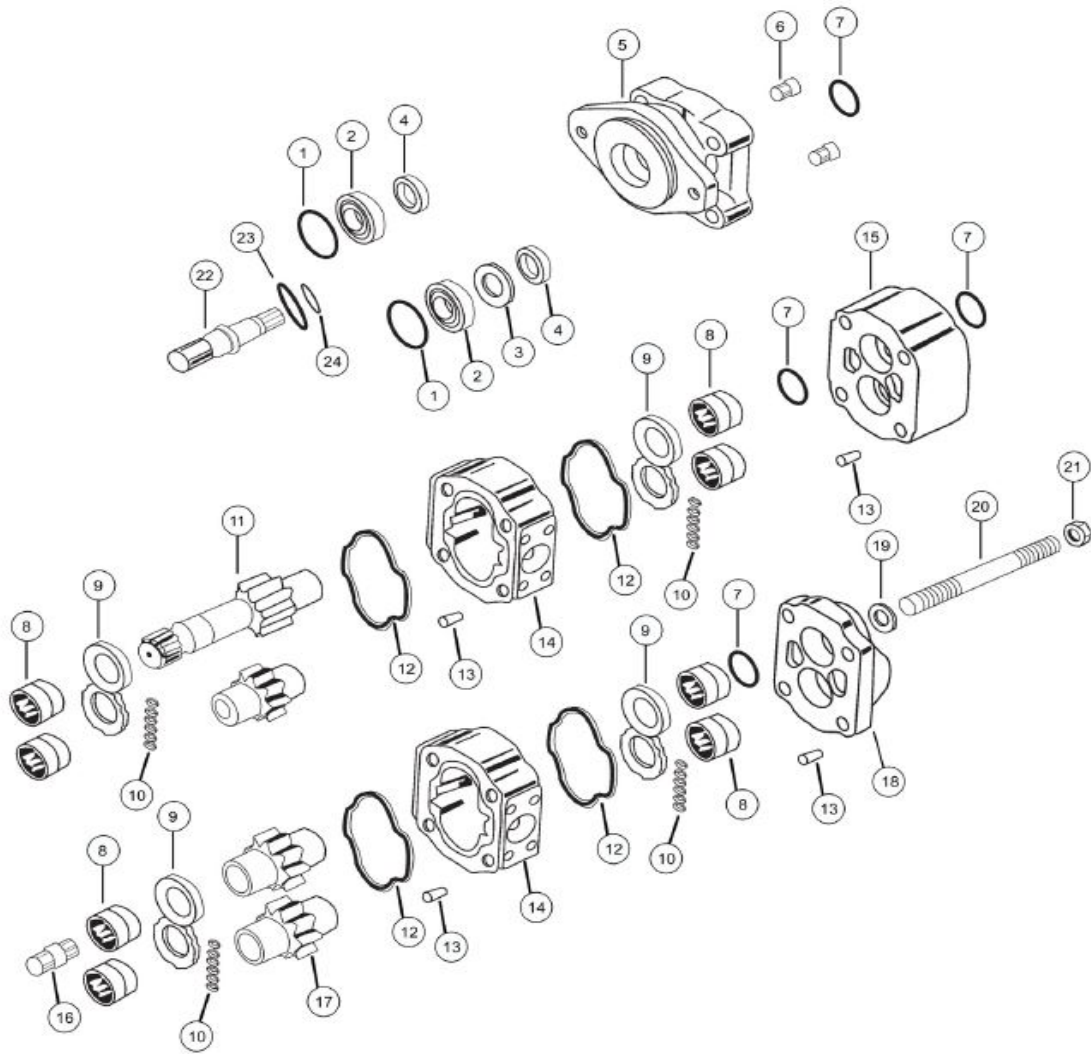


50-5100 SERIES



1	SHAFT BRG. SNAP RING	X05-03-77250	391-2686-065
2 a	BEARING SPACER & SEAL RETAINER FOR MOTORS	A50-60-10000	391-3383-087
2 b	INPUT SHAFT BEARING	X03-16-13272	391-0381-077
3	MOTOR SEAL RETAINER USED WITH SHAFT BEARING	A50-60-30000	391-3383-020
4 a	PUMP LIP SEAL	X83-11-03308	391-2883-103
4 b	MOTOR LIP SEAL	X83-36-03309	391-2883-115
4 c	PUMP LIP SEAL FOR CONTINENTAL SHAFT ONLY	X89-11-03308	391-2883-133
5 a	50 PAD PILOT PUMP SHAFT END COVER TYPE 00	A50-10-21100	313-5013-201
5 b	50 4 BOLT B PILOT PUMP SHAFT END COVER TYPE 42 (4" or 101,6 mm pilot)	A50-10-21420	313-5033-201
5 c	50 4 BOLT C PILOT PUMP SHAFT END COVER TYPE 78 (5" or 127 mm pilot)	A50-10-21430	313-5033-202
5 d	50 2 BOLT B PILOT PUMP SHAFT END COVER TYPE 97 (4" or 101,6 mm pilot)	A50-10-21220	313-5023-204
5 e	50 2 BOLT C PILOT PUMP SHAFT END COVER TYPE 98 (5" or 127 mm pilot)	A50-10-21230	313-5023-203
5 f	50 2 BOLT B (TYPE 2) PILOT PUMP SHAFT END COVER TYPE 96 (4" or 101,6 mm pilot)	A50-10-22220	313-5029-201
5 g	50 2 BOLT C (TYPE 2) PILOT PUMP SHAFT END COVER TYPE 99 (5" or 127 mm pilot)	A50-10-22230	313-5029-202
5 h	50/50 SHAFT END COVER FOR PIGGYBACK UNITS TYPE 91	A41-10-21500	313-5029-206
5 i	75/50 SHAFT END COVER FOR PIGGYBACK UNITS TYPE 92	A42-10-21500	313-5029-207
5 j	50 PAD PILOT MOTOR SHAFT END COVER TYPE 00	A50-10-41100	313-5013-202
5 k	50 4 BOLT B PILOT MOTOR SHAFT END COVER TYPE 42 (4" or 101,6 mm pilot)	A50-10-41420	313-5033-405
5 L	50 4 BOLT C PILOT MOTOR SHAFT END COVER TYPE 78 (5" or 127 mm pilot)	A50-10-41430	313-5033-403
5 m	50 2 BOLT B PILOT MOTOR SHAFT END COVER TYPE 97 (4" or 101,6 mm pilot)	A50-10-41220	313-5023-206
5 n	50 2 BOLT C PILOT MOTOR SHAFT END COVER TYPE 98 (5" or 127 mm pilot)	A50-10-41230	313-5023-205
6 a	CHECK VALVE MOTOR	A00-75-11000	391-3681-001
6 b	PRESSURE PLUG PUMP	X02-03-32110	391-2286-004
7	RING SEAL	X81-76-03305	391-2585-009
8	ROLLER BEARING (Ø 1.937" O.D.)	X03-25-13349	391-0381-059
9 a	PUMP & MOTOR THRUST PLATE	A25-70-10000	391-2185-012
9 b	DRY VALVE THRUST PLATE	A50-70-10000	391-2185-041
10	POCKET SEAL	X85-11-00002	391-2882-050
11 a	SHAFT & GEAR 14 TOOTH SPLINE 1.228" maj. dia. TYPE 7	A50-50-XX245	313-29XX-250
11 b	SHAFT & GEAR 1.250" KEYED (5/16") TYPE 11	A50-50-XX145	313-29XX-750
11 c	SHAFT & GEAR SET 13 TOOTH SPLINE 0.858" maj. dia. TYPE 25	A50-50-XX225	313-29XX-230
11 d	SHAFT & GEAR SET 0.9984" dia. KEYED (1/4" x 3/8" x 1 1/4") TYPE 43	A50-50-XX135	313-29XX-740
11 e	SHAFT & GEAR 14 TOOTH SPLINE 1.228" maj. dia. TYPE 53 TYPE 2	A50-50-XX246	313-29XX-450
11 f	SHAFT & GEAR SET 13 TOOTH SPLINE 0.858" maj. dia. TYPE 65 TYPE 2	A50-50-XX226	313-29XX-430
12	PUMP & MOTOR HOUSING GASKET	X85-11-10803	391-2884-021
13	PUMP & MOTOR GEAR HOUSING	A25-32-XX000	303-80XX-100
14 a	50 MOTOR BEARING CARRIER BLANK	A50-40-00000	313-7300-100
14 b	50 PUMP BEARING CARRIER WITH COMMON PASSAGE	A50-40-20000	313-7363-100
15	CONNECTING SHAFT	A50-50-00500	313-1133-001
16	GEAR SET ONLY	A50-50-XX000	313-28XX-000
17 a	50 PUMP & MOTOR PORT END COVER	A50-22-00000	313-3100-100
17 b	50 PUMP & MOTOR PORT END COVER SPECIAL LARGER PORTING	A50-27-00000	313-3400-100
17 c	50 PIGGY BACK REAR PORT END COVER	A50-22-03000	313-5029-205
18	FLAT WASHER (5/8")	X45-10-17005	391-3784-028
19	BOLTS / STUDS (5/8"-UNC)	See page	Fasteners
20	HEX NUT (5/8"-UNC)	X42-11-16000	391-1451-076
21 a	CONTINENTAL SHAFT TYPE 11 (1 1/4" Ø KEYED 5/16")	A50-50-00141	313-1500-500
21 b	CONTINENTAL SHAFT TYPE 7 (1.250" Ø - 14 TOOTH SPLINE)	A50-50-00241	313-1135-194
21 c	CONTINENTAL SHAFT TYPE 25 (0.875" Ø- 13 TOOTH SPLINE)	A50-50-00221	313-1000-300
21 d	CONTINENTAL SHAFT TYPE 43 (1.00" Ø x 1/4" x 3/8" x 1 1/4" key)	A50-50-00131	313-1500-400
21 e	CONTINENTAL SHAFT TYPE 73 LONG (1 1/4" Ø KEYED 5/16")	A50-50-00147	313-1500-502
21 f	CONTINENTAL SHAFT TYPE 98 - SPLINED - SAE BB 15T	A50-50-00231	313-1000-400
22	CONTINENTAL SHAFT BRG. RETAINER (MAY NOT BE REQUIRED)	A50-60-20000	391-3381-046
23	CONTINENTAL SHAFT BRG. RETAINER SNAP RING (MAY NOT BE REQUIRED)	X05-02-35120	391-2685-040

51-5100 SERIES



1	SHAFT BRG. SNAP RING	X05-03-77250	391-2686-065
2 a	BEARING SPACER & SEAL RETAINER FOR MOTORS	A50-60-10000	391-3383-087
2 b	INPUT SHAFT BEARING	X03-16-13272	391-0381-077
3	MOTOR SEAL RETAINER USED WITH SHAFT BEARING	A50-60-30000	391-3383-020
4 a	PUMP LIP SEAL	X83-11-03308	391-2883-103
4 b	MOTOR LIP SEAL	X83-36-03309	391-2883-115
4 c	PUMP LIP SEAL FOR CONTINENTAL SHAFT ONLY	X89-11-03308	391-2883-133
5 a	51 PAD PILOT PUMP SHAFT END COVER TYPE 00	A51-10-21100	313-5017-201
5 b	51 4 BOLT B PILOT PUMP SHAFT END COVER TYPE 42 (4" or 101,6 mm pilot)	A51-10-21420	313-5037-201
5 c	51 4 BOLT C PILOT PUMP SHAFT END COVER TYPE 78 (5" or 127 mm pilot)	A51-10-21430	313-5037-202
5 d	51 2 BOLT B PILOT PUMP SHAFT END COVER TYPE 97 (4" or 101,6 mm pilot)	A51-10-21220	313-5027-201
5 e	51 2 BOLT C PILOT PUMP SHAFT END COVER TYPE 98 (5" or 127 mm pilot)	A51-10-21230	313-5027-202
5 f	51 2 BOLT B (TYPE 2) PILOT PUMP SHAFT END COVER TYPE 96 (4" or 101,6 mm pilot)	A51-10-22220	313-5027-205
5 g	51 2 BOLT C (TYPE 2) PILOT PUMP SHAFT END COVER TYPE 99 (5" or 127 mm pilot)	A51-10-22230	313-5027-206
5 h	51/51 SHAFT END COVER FOR PIGGYBACK UNITS TYPE 91	A43-10-21500	313-5027-208
5 i	76/51 SHAFT END COVER FOR PIGGYBACK UNITS TYPE 92	A44-10-21500	313-5027-209
5 j	51 PAD PILOT MOTOR SHAFT END COVER TYPE 00	A51-10-41100	313-5017-401
5 k	51 4 BOLT B PILOT MOTOR SHAFT END COVER TYPE 42 (4" or 101,6 mm pilot)	A51-10-41420	313-5037-401
5 L	51 4 BOLT C PILOT MOTOR SHAFT END COVER TYPE 78 (5" or 127 mm pilot)	A51-10-41430	313-5037-402
5 m	51 2 BOLT B PILOT MOTOR SHAFT END COVER TYPE 97 (4" or 101,6 mm pilot)	A51-10-41220	313-5027-401
5 n	51 2 BOLT C PILOT MOTOR SHAFT END COVER TYPE 98 (5" or 127 mm pilot)	A51-10-41230	313-5027-402
6 a	CHECK VALVE MOTOR	A00-75-11000	391-3681-001
6 b	PRESSURE PLUG PUMP	X02-03-32110	391-2286-004
7	RING SEAL	X81-76-03305	391-2585-009
8	ROLLER BEARING (Ø 1.937" O.D.)	X03-25-13349	391-0381-059
9 a	PUMP THRUST PLATE	A51-70-20000	391-2185-029
9 b	MOTOR THRUST PLATE	A25-70-10000	391-2185-012
9 c	DRY VALVE THRUST PLATE	A50-70-10000	391-2185-041
10	POCKET SEAL	X85-11-00002	391-2882-050
11 a	SHAFT & GEAR 14 TOOTH SPLINE 1.228" maj. dia. TYPE 7	A50-50-XX245	313-29XX-250
11 b	SHAFT & GEAR 1.250" KEYED (5/16") TYPE 11	A50-50-XX145	313-29XX-750
11 c	SHAFT & GEAR SET 13 TOOTH SPLINE 0.858" maj. dia. TYPE 25	A50-50-XX225	313-29XX-230
11 d	SHAFT & GEAR SET 0.9984" dia. KEYED (1/4" x 3/8" x 1 1/4") TYPE 43	A50-50-XX135	313-29XX-740
11 e	SHAFT & GEAR 14 TOOTH SPLINE 1.228" maj. dia. TYPE 53 TYPE 2	A50-50-XX246	313-29XX-450
11 f	SHAFT & GEAR SET 13 TOOTH SPLINE 0.858" maj. dia. TYPE 65 TYPE 2	A50-50-XX226	313-29XX-430
12	PUMP & MOTOR HOUSING GASKET	X85-11-10803	391-2884-021
13	HOUSING DOWELL PIN	A00-94-11025	391-2082-032
14	PUMP & MOTOR GEAR HOUSING	A51-32-XX000	313-82XX-100
15 a	51 MOTOR BEARING CARRIER BLANK	A51-40-00000	313-7740-100
15 b	51 PUMP BEARING CARRIER WITH COMMON PASSAGE	A51-40-20000	313-7723-100
16	CONNECTING SHAFT	A50-50-00500	313-1133-001
17	GEAR SET ONLY	A50-50-XX000	313-28XX-000
18 a	51 PUMP & MOTOR PORT END COVER	A51-22-00000	313-3120-100
18 b	51 PUMP & MOTOR PORT END COVER SPECIAL LARGER PORTING	A51-27-00000	313-3420-100
18 c	51 PIGGY BACK REAR PORT END COVER	A51-22-03000	313-5027-212
19	FLAT WASHER (5/8")	X45-10-17005	391-3784-028
20	BOLTS / STUDS (5/8"-UNC)	See page	Fasteners
21	HEX NUT (5/8"-UNC)	X42-11-16000	391-1451-076
22 a	CONTINENTAL SHAFT TYPE 11 (1.250" Ø KEYED 5/16")	A50-50-00141	313-1500-500
22 b	CONTINENTAL SHAFT TYPE 7 (1.250" Ø - 14 TOOTH SPLINE)	A50-50-00241	313-1135-194
22 c	CONTINENTAL SHAFT TYPE 25 (0.875" Ø- 13 TOOTH SPLINE)	A50-50-00221	313-1000-300
22 d	CONTINENTAL SHAFT TYPE 43 (1.00" Ø x 1/4" x 3/8" x 1 1/4" key)	A50-50-00131	313-1500-400
22 e	CONTINENTAL SHAFT TYPE 73 LONG (1.250" Ø KEYED 5/16")	A50-50-00147	313-1500-502
23	CONTINENTAL SHAFT BRG. RETAINER (MAY NOT BE REQUIRED)	A50-60-20000	391-3381-046

[illegible]

